

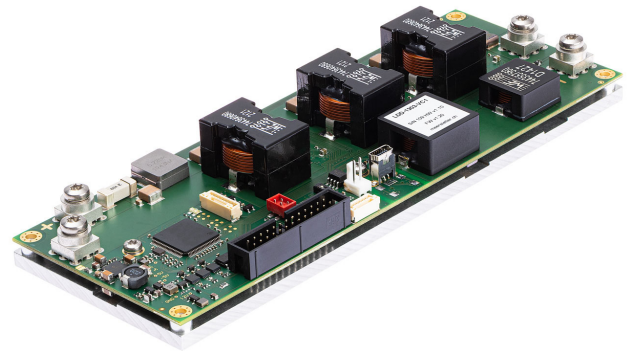
LDD-1303

Hardware Version v1.40

The **LDD-1303** is a current driver designed to precision-drive laser diodes or other loads in CW. Featuring fully digital current and optional light power control, various safety features and comprehensive communication interfaces, it offers a complete solution for continuous or modulated applications. The device communicates through various interfaces, provides an API for system integration and comes with a comprehensive GUI software for seamless operation.

HIGHLIGHTS

- **Input Voltage:** 10.5 – 60 VDC
- **Laser Diode Driver:**
 - Compliance Voltage: 1 – 120 V
 - Output Current: 0 – 20 A
 - Efficiency: > 95 % (@ > 50 % Load)
 - Compliance Voltage can be higher than Supply Voltage (Buck-Boost)
 - Ultra-Fast Switch-off for optimal LD protection
 - 1 ms – CW operation
 - High output current resolution (2 mA) and low ripple (< 0.5 %)
- Dimensions: 190 × 70 × 28 mm
- Digital PID-controlled current source with internal signal generator and LUT
- Safety features: Interlock input and overvoltage/ -current/ -temperature protection
- Easy configuration via provided GUI software
- Stand-alone or remote-controlled operation via USB (isolated), RS485, RS232 TTL or CANopen CiA 301
- GPIO features for monitoring and control (Enable, 4-Wire Fan, Error Indication, etc.)
- Optional **LPC** feature allows for precise controlling of Light Power through Photodiode feedback



Trial Device & Technical Support

Trial devices and technical support are available for evaluation projects. Please contact support@meerstetter.ch or visit our [support center](#).

RELATED PRODUCTS

Model	Output Range	Modes	Description
LDD-1301	0–20 A / 0.5–45 V	1 ms – CW	lower voltage
LDD-1137	0–75 A / 0–70 V	1 ms – CW, modulated	higher current, lower voltage
LDD-1125	0–30 A / 0–27 V	1 μs – CW, modulated, QCW and pulsed modes	pulsing, lower power
LDD-1321	0–1.5 A / 0–14 V	CW, Add-on TEC Controller available	lower power, more compact

See the [full product overview](#) in the Meerstetter Engineering's Product Compatibility section.

TABLE OF CONTENTS

1	Specifications	3
1.1	Absolute Maximum Ratings.....	3
1.2	Operating Characteristics.....	3
1.3	Electrical Characteristics.....	4
1.4	Laser Output Characteristics	4
1.5	Safety Characteristics	5
1.6	External Temperature Measurement (NTC only)	5
2	Functional Description	6
2.1	Current-Controlled Operation Modes and Communication Options.....	6
2.2	Service Software	6
3	Interfaces and Connectors	7
3.1	General Purpose Digital I/O Characteristics (GPIO1 ... GPIO10)	7
3.2	Analog Input and Output Characteristics.....	7
3.3	Interlock Input Characteristics	8
3.4	Photodiode Input Characteristics (only available with PD feature)	8
3.5	Device Connectors Overview	8
3.6	Interface Connector X7	9
3.7	Interlock Connector X8.....	9
3.8	Temperature and Light Measurement Connector X9	10
3.9	AUX Connector X6	10
3.10	USB Connector X11.....	10
4	Mechanical Data	11
4.1	Dimensions and Mounting Holes.....	11
5	Ordering and Configuration	12
5.1	LDD-1303 Ordering Information & Configuration	12
5.2	Ordering Confirmation Example	12
6	All Meerstetter Engineering Products	13
6.1	Meerstetter Engineering's Product Compatibility	13
7	Change History	14

1 SPECIFICATIONS

1.1 Absolute Maximum Ratings¹

		Min	Max	Unit
Voltage	$U_{IN, DC}$		63	V
	U_{OUT}		130	V
Current	I_{IN} (On Board Fuse)		53	A
	I_{OUT}		25	A

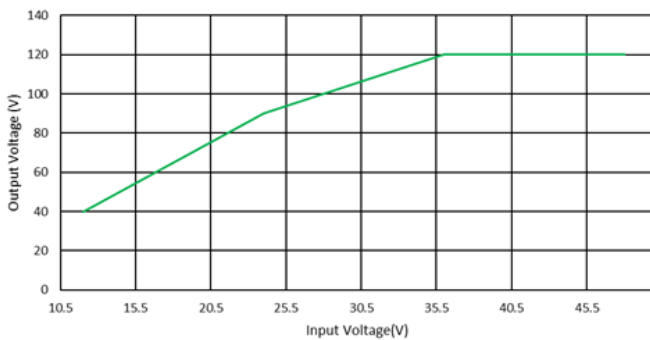
¹ Operation at or beyond the absolute maximum ratings may result in permanent device damage. These limits are stress ratings only and functional operation of the device at these conditions is not guaranteed. Prolonged exposure to absolute maximum conditions can adversely affect long-term reliability and should be avoided during normal operation.

1.2 Operating Characteristics

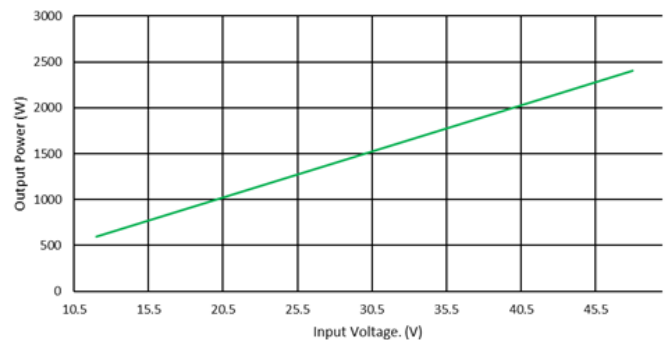
		Min	Max	Unit
Temperature	Operation Temperature	0	50	°C
	System Base Plate		50	°C
	Storage	-40	80	°C
Humidity	RH _{OP} , non-condensing	5	95	%

Unless otherwise noted: $T_A = 25\text{ °C}$, $U_{IN} = 48\text{ V}$

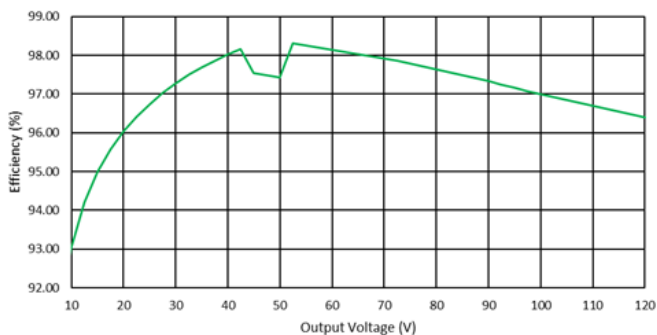
Max. Output Voltage vs. Input Voltage



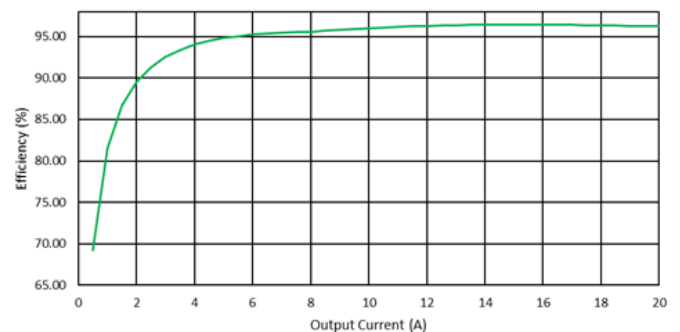
Max. Output Power vs. Input Voltage



Efficiency vs. Output Voltage @ 20 A Output Current



Efficiency vs. Output Current @ 120 V Output Voltage



1.3 Electrical Characteristics

Unless otherwise noted: $T_A = 25\text{ °C}$, $U_{IN} = 48\text{ V}$, $U_{LD} = 120\text{ V}$

Symbol	Parameter	Test Conditions / Hints	Min	Typ	Max	Unit
DC Power Supply Input:						
U_{IN}	Supply voltage		10.5	48	60	V
U_{IN_RIPPLE}	Ripple tolerance ¹			300		mV _{PP}

[1] Input ripple voltage can directly influence the ripple current at the output.

1.4 Laser Output Characteristics

Unless otherwise noted: $T_A = 25\text{ °C}$, $U_{IN} = 48\text{ V}$, $U_{LD} = 120\text{ V}$

Symbol	Parameter	Test Conditions / Hints	Min	Typ	Max	Unit
Output CW:						
I_{OUT}	Current range		0		20	A
$T_{\text{coefficient}}$	Temp. coefficient	$I_{out} = 20\text{ A}$, $T_A = 10 - 50\text{ °C}$		3464		ppm/K
I_{OUT_RES}	Current resolution			2		mA
I_{OUT_RIPPLE}	Current ripple	$I_{out} > 2\text{ A}$		0.4 ¹		%
I_{OUT_ACC}	Current accuracy	Calibrated		30		mA
U_F	Diode compliance voltage	$U_{IN} = 48\text{ V}$	1 ²		120	V
U_{OUT_MAX}	Output voltage maximum			120		V
U_{OUT_ACC}	Voltage accuracy	Calibrated, $I_{out} < 1\text{ A}$		100		mV
P_{OUT}	Output power	$U_{LD} = 120\text{ V}$			2.4	kW
I_{OUT_Rise}	Output current rise timer	10 – 90%, PID Optimized, $L_{Load} < 500\text{ nH}$, $I_{OUT} = 20\text{ A}$			350	μs

1 Measured at $I_{OUT} = 20\text{ A}$ and $U_{LD} = 100\text{ V}$

2 Current Ripple may increase, and current control performance may decrease at compliance voltages below 5V depending on load.

1.5 Safety Characteristics

Unless otherwise noted: $T_A = 25\text{ °C}$, $U_{IN} = 48\text{ V}$, $U_{LD} = 120\text{ V}$

Symbol	Parameter	Test Conditions / Hints	Min	Typ	Max	Unit
I/O Ports:						
$t_{OFF_CURRENT}$	Overcurrent ¹	3 Ω resistive load			20	μs
$t_{OFF_OPVAL_L}$	Operating Values ¹	$U_{IN} = 32\text{ V}$, $U_{LD} = 36\text{ V}$			50	μs
$t_{OFF_OPVAL_U}$	Operating Values ¹	$U_{IN} = 32\text{ V}$, $U_{LD} = 36\text{ V}$			5	ms
t_{OFF_SFAIL}	System failure	System status			TBD	μs
$t_{OFF_INTERLOCK}$	Interlock	$U_{IN} = 31\text{ V}$, $U_{LD} = 10\text{ V}$, 83 Ω resistive load switch off time depends on operating conditions		20		μs

¹ Switch-off time depends on operating conditions and load.

1.6 External Temperature Measurement (NTC only)

$T_A = 25\text{ °C}$, measurement configuration = 12 bit / 2-wire / unshielded cable < 50 mm, °T probe = NTC B_{25/100} 3988K R₂₅ 10k

Symbol	Parameter	Test Conditions / Hints	Min	Typ	Max	Unit
$R_{LR, RANGE}$	Measurement range		295 ≈ 130		106400 ≈ -21	Ω $^{\circ}\text{C}$

2 FUNCTIONAL DESCRIPTION

2.1 Current-Controlled Operation Modes and Communication Options

The LDD-1303 is an OEM high performance current source that is primarily designed to operate in CW. It is configured over an industry-standard RS485, RS232 TTL or a USB connection, either GUI-driven using the included Service Software, or by direct parameter control using the predefined communication protocol. Basic system status is visually indicated by on-board LEDs, more detailed status information can be polled at any time. The LDD-1303 can operate in a stand-alone configuration as well as in a remotely controlled manner, with parameters adjusted on the fly. The laser diode driver is current-PID-controlled.

Configuration parameters further include: Control source selection, maximum current limits, nominal current ramping, PID controller settings, NTC temperature sensor modeling coefficients, measurement circuitry calibration, error thresholds, etc. Please refer to the user manual for further information.

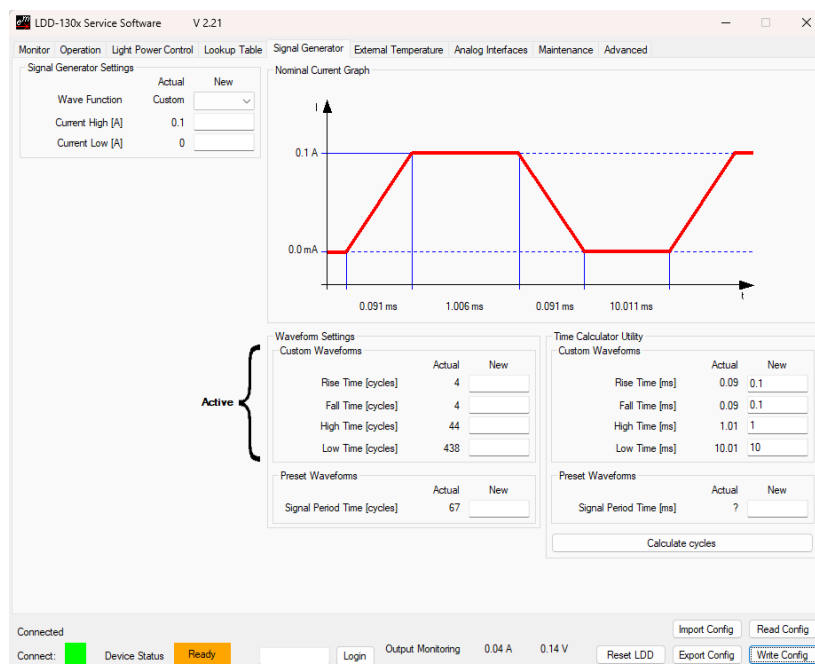
2.2 Service Software

The included Service Software is a powerful tool that allows monitoring and full configuration of the LDD-1303 via a standard USB, RS485 or an RS232 TLL connection from a PC running Windows.

This tool is ideal for laboratory setups, product evaluation diagnosis, debugging and commissioning:

- internal generators set up (see Figure below)
- configuration import and export
- error codes and built-in descriptions
- hardware configuration (e.g. calibration)
- maintenance (e.g. firmware upgrades)

Please refer to the laser diode driver user manual for more information on features and system requirements.



CW Current Modulation by Internal Generators.

3 INTERFACES AND CONNECTORS

3.1 General Purpose Digital I/O Characteristics (GPIO1 ... GPIO10)

Unless otherwise noted: $T_A = 25\text{ °C}$

Symbol	Parameter	Test Conditions / Hints	Min	Typ	Max	Unit
Input Characteristics:						
U_{IH}	Logic high input threshold		2			V
U_{IL}	Logic low input threshold				1	V
U_{IMAX}	Maximum input voltage	General Purpose Inputs are 5V-tolerant	-0.3		5.5	V
Output Characteristics:						
U_{OH}	Logic high output voltage	Output current 8 mA	2.8	3.3	3.4	V
U_{OL}	Logic low output voltage	Input current 8 mA			0.4	V
Z_{OUT}	Output Impedance		110	120	150	Ω
I_{OUT}	Output Sink or Source Current			± 8	± 20	mA
ESD Protection:						
U_{PP}	ESD discharge	IEC61000-4-2		18		kV

3.2 Analog Input and Output Characteristics

Unless otherwise noted: $T_A = 25\text{ °C}$. Voltages referenced to X2 (GND)

Symbol	Parameter	Test Conditions / Hints	Min	Typ	Max	Unit
Input Characteristics:						
U_{I+}	Voltage at the Analog IN+ Pin		-1		11	V
U_{I-}	Voltage at the Analog IN- Pin		-1		11	V
U_{IN}	Nominal Input Voltage (difference between IN+ and IN-)		0		10	V
Output Characteristics:						
U_O	Analog Output Voltage		0		10	V
I_{OUT}	Analog Output Current				20	mA

3.3 Interlock Input Characteristics

Unless otherwise noted: $T_A = 25\text{ }^\circ\text{C}$.

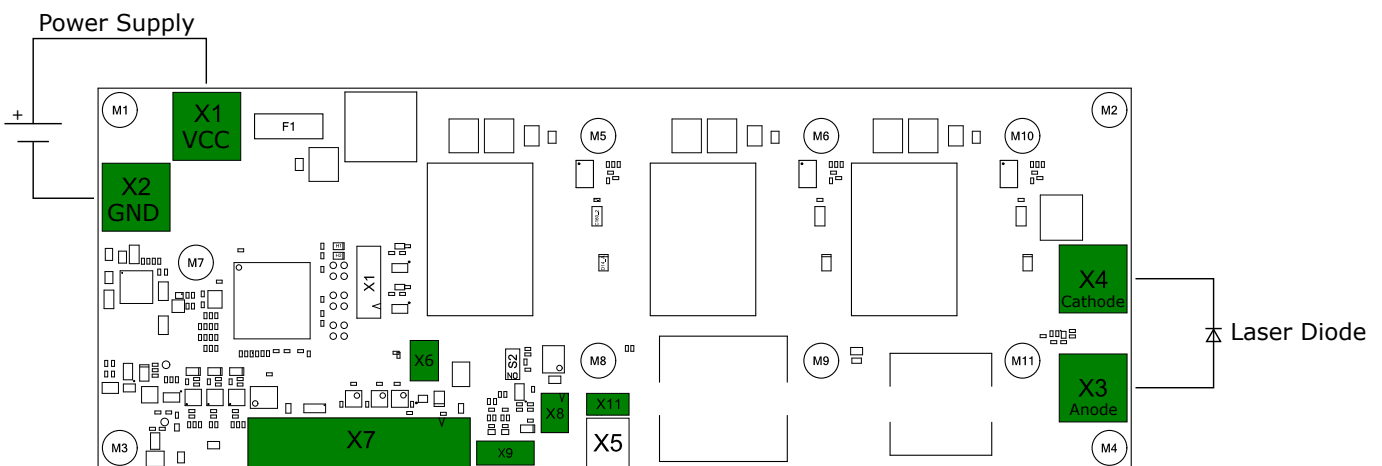
Symbol	Parameter	Test Conditions / Hints	Min	Typ	Max	Unit
Input Characteristics:						
U_{IAct}	Interlock active input voltage range	Voltage range which is detected as active input	3		30	V
U_{IORM}	Maximum Working Insulation Voltage				120	V

3.4 Photodiode Input Characteristics (only available with PD feature)

Unless otherwise noted: $T_A = 25\text{ }^\circ\text{C}$.

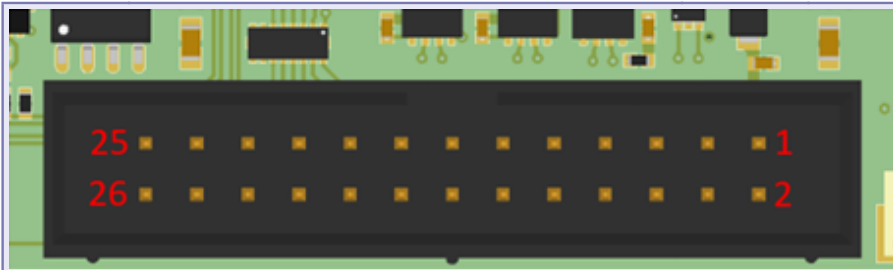
Symbol	Parameter	Test Conditions / Hints	Min	Typ	Max	Unit
Input Characteristics:						
I_{IN}	Photodiode current	PD4	0		4	mA
		PD2	0		2	
		PD1	0		1	
		PD0.5	0		0.5	

3.5 Device Connectors Overview



3.6 Interface Connector X7

Mating Connector: Würth 61202623021



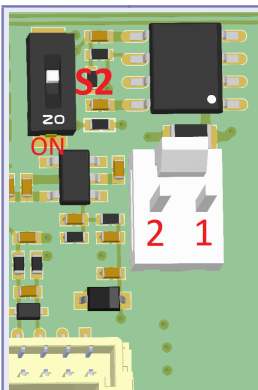
PIN 1	+5V	PIN14	GPIO4
PIN 2	GND	PIN 15	GPIO5
PIN 3	+3.3V	PIN 16	GPIO6
PIN 4	RS485 1 A/D+	PIN 17	GPIO7
PIN 5	RS485 1 B/D-	PIN 18	GPIO8
PIN 6	RS232 TTL RX	PIN 19	GPIO9
PIN 7	RS232 TTL TX	PIN 20	GPIO10
PIN 8	GND	PIN 21	Not Connected/Reserved
PIN 9	CAN H	PIN 22	Not Connected/Reserved
PIN 10	CAN L	PIN 23	Analog GND
PIN 11	GPIO1	PIN 24	0-10V Analog Out
PIN 12	GPIO2	PIN 25	0-10V Analog IN+
PIN 13	GPIO3	PIN 26	0-10V Analog IN-

3.7 Interlock Connector X8

To enable the LDD, apply a voltage between the Interlock + and Interlock – Pins. The Interlock Pins are galvanically isolated from the LDD.

The DIP-Switch S2 can be switched ON to disable the Interlock functionality.

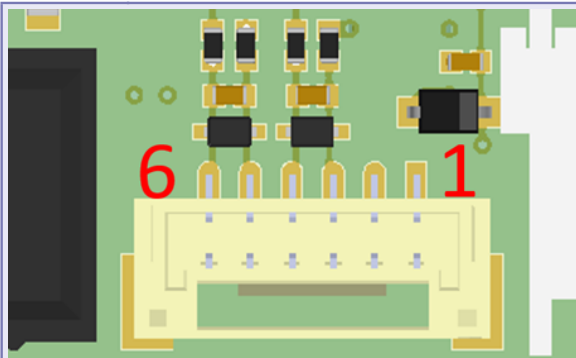
Mating connector: Molex 0022013027



PIN 1	Interlock +	PIN 2	Interlock –
-------	-------------	-------	-------------

3.8 Temperature and Light Measurement Connector X9

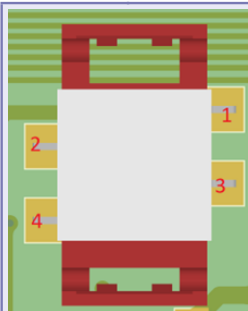
Mating Connector: JST GHR-06V-S



PIN 1	Photo Diode Anode	PIN 4	NTC 2 B
PIN 2	Photo Diode Cathode	PIN 5	NTC 1 A
PIN 3	NTC 2 A	PIN 6	NTC 1 B

3.9 AUX Connector X6

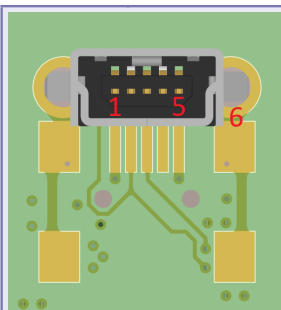
Mating Connector: Würth 690157000472



PIN 1	+5V	PIN 3	CAN H
PIN 2	GND	PIN 4	CAN L

3.10 USB Connector X11

Mating Connector: USB Mini Type B

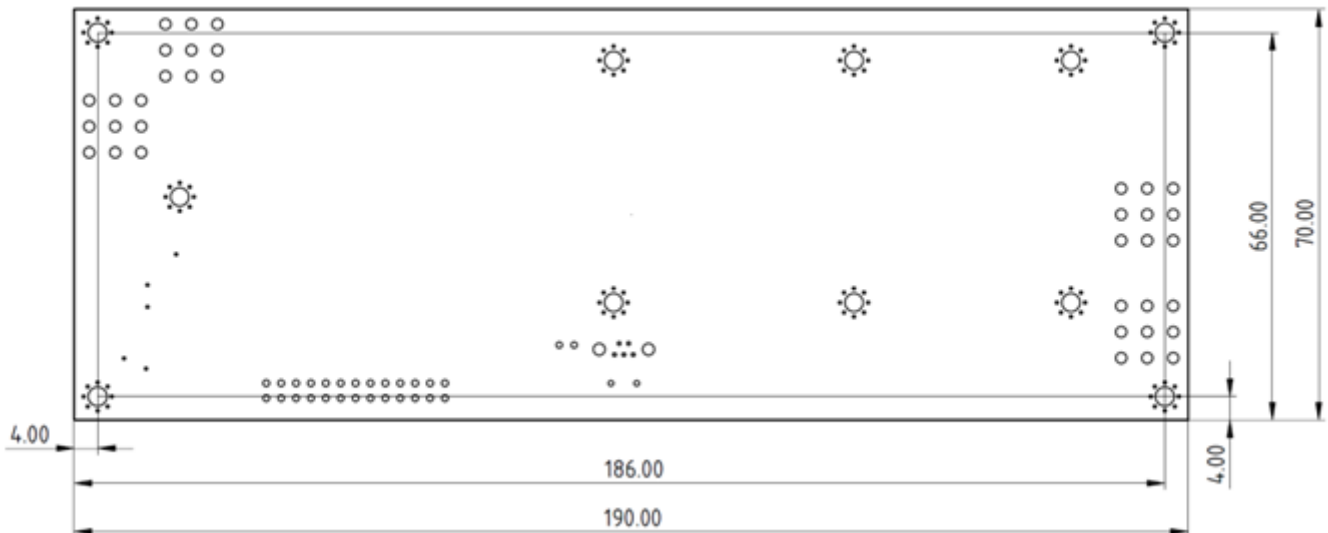


PIN 1	+5V	PIN 4	ID (not used)
PIN 2	DATA-	PIN 5	GND
PIN 3	DATA+	PIN 6	SHIELD

4 MECHANICAL DATA

4.1 Dimensions and Mounting Holes

The four holes in each corner can be used to mount the device onto a heatsink. Hole diameter = 3.2 mm. A 3D model of the device is available on our website.



Vertical height: 28 mm.

5 ORDERING AND CONFIGURATION

5.1 LDD-1303 Ordering Information & Configuration

Example Configuration:

LDD-1303 (PD4) FW2.21

Variant Name	Requirement	Description	Options / Single choice
Photodiode Input Type	Required	Select the maximum measurable photodiode current in mA. Default: PD4, 4mA. Laser power control feature sold separately.	PD4, PD2, PD1, PD0.5
Firmware Version	Optional	Select a compatible firmware if you do not want the latest version (default). Check the relevant Software Release Notes for details.	Example: FW2.21
Customer Specific Modifications	Advanced	Usually hardware modifications, available only on demand and quote.	Empty, or example: CS3
Customer Specific Profile	Advanced	Preset parameters/configuration, available only on demand and quote.	Empty, or example: 15
Hardware Version	-	For reference, specifies the hardware version (latest by default, subject to future change).	Example: HW1.40

5.2 Ordering Confirmation Example

LDD-1303 (PD4, HW1.40)

Firmware Version: FW2.21

String can additionally contain:

Profile: Default

6 ALL MEERSTETTER ENGINEERING PRODUCTS

6.1 Meerstetter Engineering's Product Compatibility

The Laser Diode Drivers and TEC Controllers from Meerstetter have been developed to work along with each other. They share the same platform bus, communication protocol and hardware architecture. See the following table for an overview of the Laser Diode Drivers and TEC Controllers from Meerstetter Engineering:

Model	Output	Description	
Laser Diode Drivers			
LDD-1321	0–1.5 A / 0–14 V	CW, Add-on TEC Controller available	
LDD-1301	0–20 A / 0.5–45 V	1 ms – CW	
LDD-1303	0–20 A / 1–120 V	1 ms – CW	
LDD-1137	0–75 A / 0–70 V	1 ms – CW	
LDD-1124	0–1.5 A / 0–15 V	CW, modulated modes	
LDD-1121	0–15 A / 0–15 V	1 μ s – CW, modulated, QCW and pulsed modes	
LDD-1125	0–30 A / 0–27 V	1 μ s – CW, modulated, QCW and pulsed modes	
TEC Controllers			
Single-Channel Models	TEC-1092	± 1.2 A / ± 9.6 V	Micro
	TEC-1091	± 4 A / ± 21 V	Small
	TEC-1089	± 10 A / ± 21 V	Medium
	TEC-1162	± 5 A / ± 56 V	Medium-high
	TEC-1090	± 16 A / ± 30 V	Large
	TEC-1163	± 25 A / ± 56 V	Extra-large
Dual-Channel Models	TEC-1161-4A	2 x (± 4 A / ± 21 V)	Small
	TEC-1161-10A	2 x (± 10 A / ± 21 V)	Medium
	TEC-1122	2 x (± 10 A / ± 21 V)	Medium
	TEC-1166	2 x (± 5 A / ± 56 V)	Medium-high
	TEC-1123	2 x (± 16 A / ± 30 V)	Large
	TEC-1167	2 x (± 25 A / ± 56 V)	Extra-large

7 CHANGE HISTORY

Date of change	Version	Changed / Approved	HW Version
January 12, 2022	B	LS; LS/RK/ML; RK/HS	
Change / Reason <ul style="list-style-type: none"> • Add Change History • Review, small changes (types, format) • Release 			
April 21, 2022	C	RK/HS; XF/HS; HS/PV; RS/HS; HS/RS	
Change / Reason <ul style="list-style-type: none"> • Fix document formatting errors • Edit minimum compliance voltage • Edit compliance/output voltage text for clarity • Remove redundant efficiency figures 			
July 19, 2022	D	RS / CU	
Change / Reason <ul style="list-style-type: none"> • Photodiode input now specified through LPC options, new configurations available • Photodiode input is only available with the LPC Option • Temperature coefficient and current accuracy added 			
July 19, 2022	E	CU / RS	
Change / Reason <ul style="list-style-type: none"> • Hardware version increased to v1.20 • Formatting 			
September 23, 2022	F	ML / CU	
Change / Reason <ul style="list-style-type: none"> • Add CANopen feature and Pin definition 			
October 26, 2022	F	CU / HS	
Change / Reason <ul style="list-style-type: none"> • Front Page, Absolute Maximum Ratings and Hardware Configuration modified • New device connector overview and second CAN pin definition added 			

Date of change	Version	Changed / Approved	HW Version
March 20, 2023	F	CU / RS	
Change / Reason <ul style="list-style-type: none"> • Absolute maximum supply voltage modified • Input supply voltage range adapted 			
July 13, 2023	G	CU / HS	
Change / Reason <ul style="list-style-type: none"> • HW version incremented • Footer fixed to the current datasheet version • Pictures of the device connectors updated • Pin assignment of the USB device connector added 			
June 3, 2025	I	RS / SC	
Change / Reason <ul style="list-style-type: none"> • AUX Connector X6 Pin-out: pin designators modified to internal standard • New label system for photodiode input, label diagram replaced 			
October 7, 2025	J	RS / SC	v1.40
Change / Reason <ul style="list-style-type: none"> • Increment HW Version to v1.40 			
April 20, 2026	K	NJ / RS	v1.40
Change / Reason <ul style="list-style-type: none"> • Mod: Datasheet design • Del: Old Ordering codes • Add: Standardized product designations and ordering codes tables • Add: Functional Description 			

MEERSTETTER ENGINEERING GMBH

Schulhausgasse 12
3113 Rubigen, Switzerland

+41 31 529 21 00

contact@meerstetter.ch

<https://www.meerstetter.ch/>

Meerstetter Engineering GmbH (ME) reserves the right to make changes without further notice to the product described herein. Information furnished by ME is believed to be accurate and reliable. However typical parameters can vary depending on the application and actual performance may vary over time. All operating parameters must be validated by the customer under actual application conditions.